



Network

Thermal

## TNO-C3062T

QVGA AI Tele lens Thermal Camera



### Key Features

- QVGA resolution (384x288, 17μm)
- 35mm Tele lens option
- High performance thermal sensitivity (NETD 20mK@25°C)
- AI based object classification (person, vehicle)
- Max. 8fps (H.265/H.264/MJPEG)
- IP66/67, IK10, NEMA4X, NEMA-TS2, MIL-STD-810H
- Secure element with FIPS 140-3 level3, CC EAL6+

## TNO-C3062T

QVGA AI Tele lens Thermal Camera



### Specifications

| Video                         |             |  |
|-------------------------------|-------------|--|
| Imaging Device                | Type        | Uncooled micro bolometer (384x288)           |
| Resolution                    |             | 768x576, 384x288                             |
| Max. Framerate                | H.265/H.264 | 8fps   |
|                               | MJPEG       | 8fps   |
| Spectral Range                |             | 8~14 $\mu$ m                                 |
| NETD                          |             | $\leq 20\text{mK}@25^{\circ}\text{C}$ , F1.0 |
| Pixel Size                    |             | 17 $\mu$ m                                   |
| Video Out                     |             | USB: Micro USB Type B                        |
| Lens                          |             |  |
| Focal Length (mm)             |             | 35   |
| Max Aperture Ratio (F number) | Wide        | 1.0  |
| Angular Field of View         | Horizontal  | 10.7°  |
|                               | Vertical    | 8.0°   |
|                               | Diagonal    | 13.3°  |
| iFoV                          |             | 0.486 mRad                                   |
| Min. Object Distance          |             | 36.1m(118.4ft)                               |
| Focus Control                 |             | Fixed  |
| Lens Type                     |             | Athermalized                                 |
| Pan / Tilt / Rotate           |             |  |
| Pan / Tilt / Rotate Range     | Pan         | 0°~350°                                      |
|                               | Tilt        | 0°~90°                                       |
|                               | Rotate      | 0°~350°                                      |
| Operational                   |             |  |
| Motion Detection              | Quantity    | 8ea  |
|                               | Shape       | 8point Polygonal zones                       |

## Operational

|  |                |   |
|--|----------------|---|
| Privacy Masking                          | Quantity       | 6ea   |
|  | Shape          | Rectangular zones   |
|  | Color / Option | Gray, Black, White  |
| Video Rotation                           |                | Flip, Mirror, Hallway view(90°/270°)  |
| Serial Interface                         |                | RS-485  |
| Alarm Interface                          | In/Out         | 2 configurable I/O ports  |
|  | Others         | Support extra alarm I/O via optional I/O box  |
| Alarm Triggers                           |                | Analytics, Network disconnect, Alarm input, Time schedule, MQTT subscription  |
| Alarm Events When Alarm Trigger Occurred |                | File upload(image): e-mail/FTP/SFTP,<br>File upload(video clip): FTP/SFTP,<br>Notification: e-mail,<br>Recording: SD/SDHC/SDXC or NAS recording at event triggers,Alarm output,<br>Handover: PTZ preset,<br>MQTT: publication |
| Audio In                                 |                | Selectable(mic in/line in)  |
| Audio Out                                |                | Line out  |
| Color Palettes                           |                | Whitehot, Blackhot, Rainbow, Rainbow2, Sepia, Red, Iron, Custom   |

## Analytics

|                        |                    |   |
|------------------------|--------------------|---|
| Classified Object Type |                    | Person, Vehicle   |
| Thumbnail              |                    | BestShot  |
| Analytics Events       | Based on AI Engine | Object detection, Virtual line(Crossing/Direction), Virtual area(Loitering/Intrusion/Enter/Exit), Motion detection  |
|                        | Normal             | Motion detection, Tampering, Audio detection, Sound classification, Shock detection, Virtual area(Appear/Disappear) |

## Radiometry

|                          |  |                          |
|--------------------------|--|--------------------------|
| Hybrid Palettes          |  | Support                  |
| ROI Condition Monitoring |  | None, Increase, Decrease |

## Network

|                   |                    |   |
|-------------------|--------------------|---|
| Ethernet          |                    | Metal shielded RJ-45(10/100/1000BASE-T)   |
| Video Compression |                    | H.265/H.264: Main/Baseline/High, MJPEG  |
| Audio Compression |                    | G.711 u-law /G.726 selectable,G.726(ADPCM) 8kHz,G.711 8kHz,<br>G.726: 16kbps,24kbps,32kbps,40kbps,<br>AAC-LC: 48kbps at 16kHz |
| Smart Codec       |                    | Manual, WiseStream II , WiseStreamIII   |
| Bitrate Control   |                    | H.265/H.264: CBR or VBR,<br>MJPEG: VBR  |
| Streaming         | Unicast            | Up to 20 users  |
|                   | Multicast          | Support   |
|                   | Multiple Streaming | Up to 10 profiles   |

## Network

|                                   |        |   |
|-----------------------------------|--------|---|
| Protocol                          |        | IPv4, IPv6, TCP/IP, UDP/IP, RTP(UDP), RTP(TCP), RTCP, RTSP, NTP, HTTP, HTTPS, SSL/TLS, DHCP, FTP, SFTP, SMTP, ICMP, IGMP, SNMPv1/v2c/v3(MIB-2), ARP, DNS, DDNS, QoS, UPnP, Bonjour, LLDP, CDP, SRTP(TCP, UDP Unicast), MQTT, Syslog |
| Application Programming Interface | ONVIF  | S, G, T, M  |
|                                   | Others | SUNAPI(HTTP API), Hanwha Vision Open Platform   |

## Security

|                        |   |
|------------------------|---|
| OS / Firmware Protect  | Encrypted firmware, Secure boot, Signed firmware                        |
| User authentication    | Digest authentication, Prevent brute-force attack                       |
| Network authentication | IEEE 802.1X(EAP-TLS, EAP-LEAP, EAP-PEAP, MSCHAPv2)                      |
| Secure Communication   | HTTPS, WSS(WebSocket Secure), SRTP                                      |
| Access Control         | IP-based access control   |
| Data Protect           | Encryption credentials, Encrypt compress for live recording file export |
| Audit                  | Access / System / Event Log management                                  |
| Device ID              | Device certificate(Hanwha Vision Root CA)                               |
| Secure Storage         | SDcard partition encrypt(AES-256), Secure element                       |
| Security Certificate   | Secure element(FIPS 140-3 level3, CC EAL6+)                             |

## General

|              |                    |                  |
|--------------|--------------------|------------------|
| Memory       | RAM                | 2GB              |
|              | Flash              | 512MB            |
| Edge Storage | Micro SD/SDHC/SDXC | Max. 1TB x 1slot |

## Environmental & Electrical

|                     |             |                                 |
|---------------------|-------------|---------------------------------|
| Operating Condition | Temperature | -40°C~+60°C(-40°F~+140°F)       |
|                     | Humidity    | 0~95% RH(non-condensing)        |
| Storage Condition   | Temperature | -50°C~+60°C(-58°F~+140°F)       |
|                     | Humidity    | 0~95% RH(non-condensing)        |
| Input Voltage       |             | PoE(IEEE802.3af, Class3), 12VDC |
| Power Consumption   | PoE         | Max. 10.8W, typical 9W          |
|                     | 12VDC       | Max. 9.4W, typical 7.7W         |

## Mechanical

|                         |  |
|-------------------------|--|
| Color                   | White  |
| Material                | Aluminum   |
| RAL Code                | RAL9003  |
| Product Dimensions      | ø107.3x275mm(ø4.22x10.83")                         |
| Product Weight          | 2370g(5.22lb)                                      |
| Compatible Conduit Hole | Support conduit compatibility via optional adaptor |

## Mechanical

|                     |                                    |
|---------------------|------------------------------------|
| Compatible Gang Box | Single, Double, 4" Octagon, Square |
|---------------------|------------------------------------|

## Certifications & Standards

|             |   |
|-------------|---|
| EMC         | FCC 47 CFR 15 Subpart B Class A, CE/UKCA - EN55032 Class A, EN 50130-4, EN 61000-3-2, EN 61000-3-3, VCCI CISPR 32 Class A, RCM AS-NZS CISPR 32 Class A, KS C 9832 Class A, KS C 9835, IC Regulation ICES-003 Issue 7 Class A  |
| Safety      | UL 62368-1, CAN/CSA C22.2 NO. 62368-1   |
| Environment | IEC/EN 63000, IEC 60529 IP66, IEC 60529 IP67, IEC 62262 IK10, NEMA TS 2-2013 (2.2.7, 2.2.8, 2.2.9), NEMA 250 type 4X, IEC 60068-2-1, IEC 60068-2-2, IEC 60068-2-6, IEC 60068-2-14, IEC 60068-2-27, IEC 60068-2-78, MIL-STD-810H 501.7, MIL-STD-810H 502.7, MIL-STD-810H 507.6, MIL-STD-810H 509.7, MIL-STD-810H 514.8, MIL-STD-810H 516.8 |

## DORI (EN62676-4 standard)

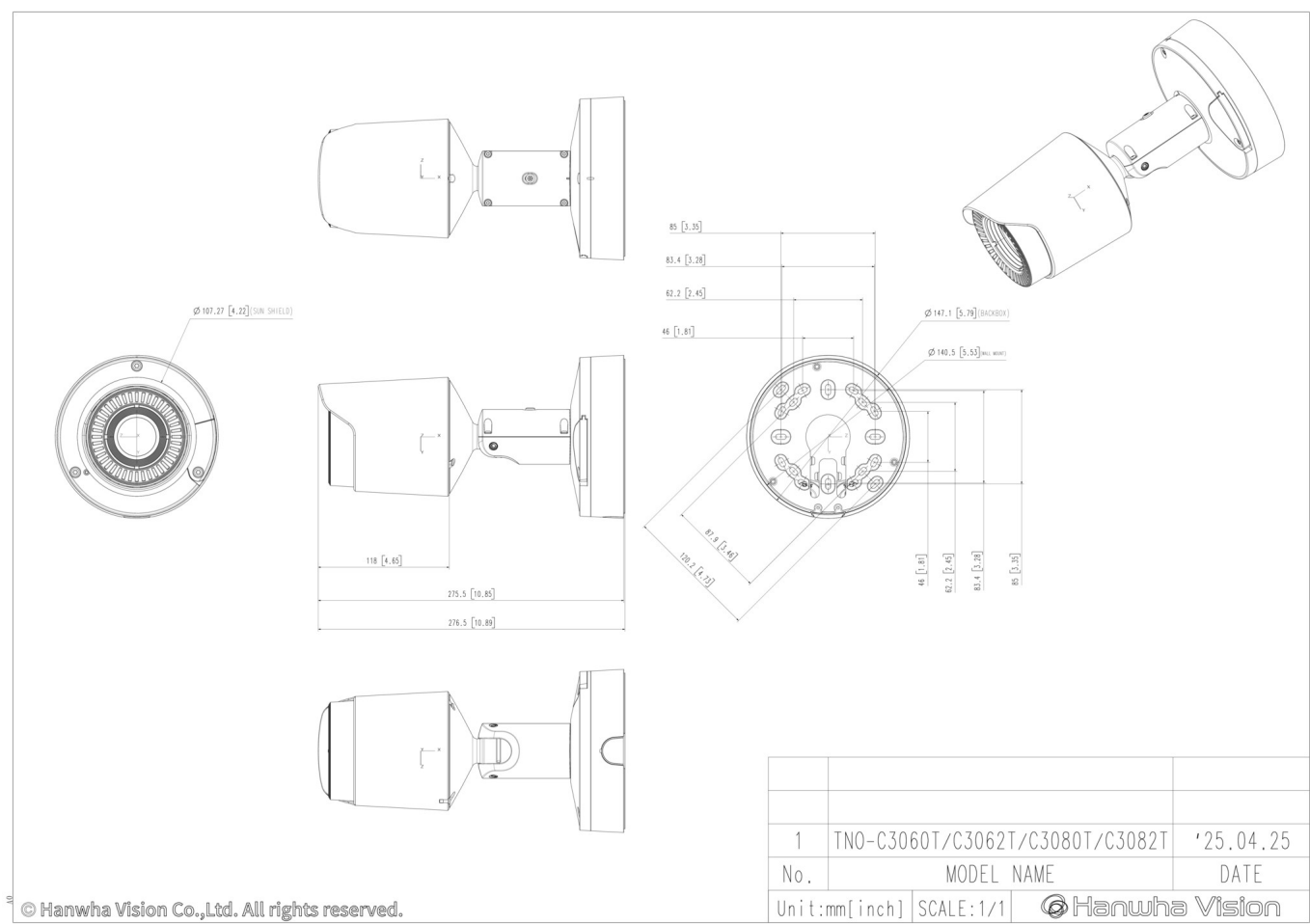
|                           |      |                  |
|---------------------------|------|------------------|
| Detect (25PPM/ 8PPF)      | Wide | 454m(1,487.81ft) |
| Recognize (125PPM/ 38PPF) | Wide | 113m(371.95ft)   |
| Identify (250PPM/ 76PPF)  | Wide | 57m(185.98ft)    |

TNO-C3062T  
QVGA AI Tele lens Thermal Camera



CAD

Unit: mm [inch]



© Hanwha Vision Co.,Ltd. All rights reserved.