

WIN-PAK® 4.6 for Galaxy

Galaxy User Management Software

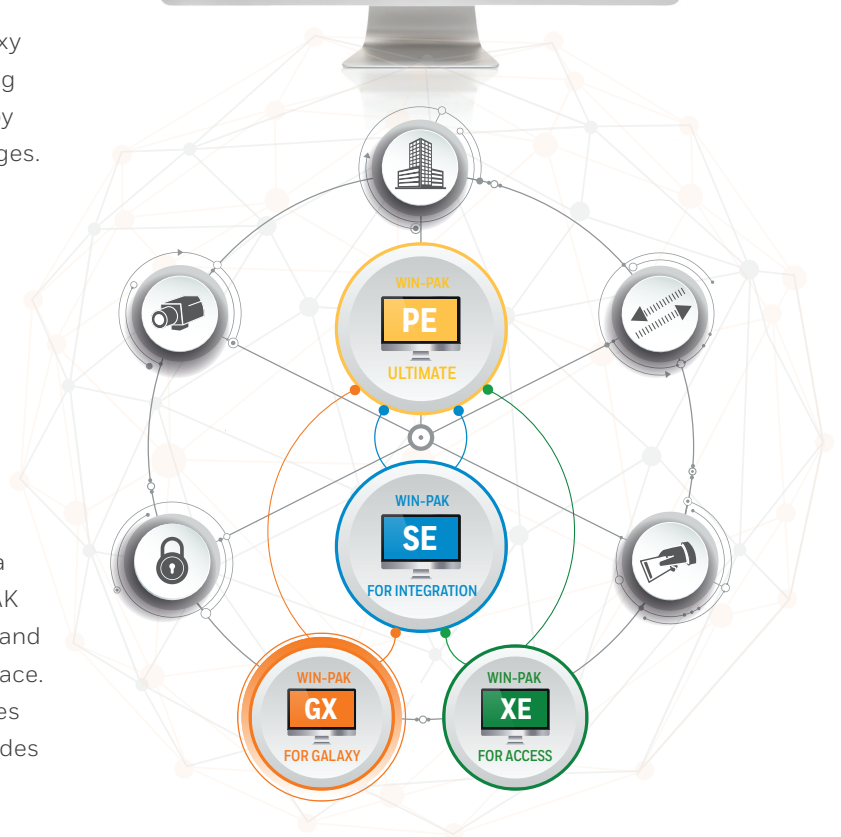
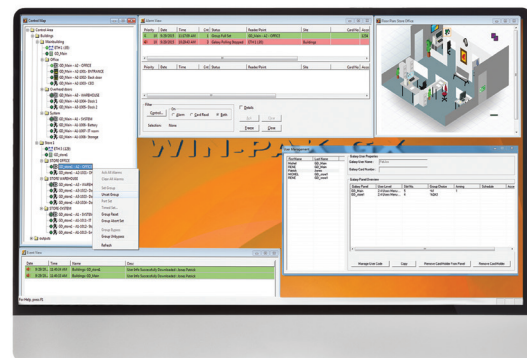
WIN-PAK 4.6 for Galaxy is the end-user software package for the management of Galaxy intruder security systems. WINPAK for Galaxy is ideal if you only currently require Intruder user management yet want the option to grow in future.

WIN-PAK 4.6 for Galaxy enables you to manage Galaxy systems across multiple sites in one place, eliminating the need for costly site visits and increases security by reducing the time required to implement policy changes.

Focusing on making user management easy and centralized, the platform simplifies and automates common tasks, enables batch processing, makes transferring credentials easy and displays information in a clear and user friendly manner.

Expand the capability of your existing Galaxy installation, enabling you to do more, while managing to save time and resources.

Honeywell's WIN-PAK 4.6 software suite represents a scalable solution that allows upgrading from WIN-PAK for Galaxy to a fully integrated Video, Access Control and Intruder management in one single easy to use interface. WIN-PAK's powerful and intuitive user interface makes common tasks across multiple sites simple and provides a complex overview of your security solutions status.



FEATURES & BENEFITS

Increase security, centralized user management

- 3 clicks to delete user from multiple Galaxy panels
- Few clicks to add a user to 5 Galaxy panels
- Auto update to all Galaxy panels, including notification
- Galaxy user name, PIN code and card number management

- User level management and automation
- Group choice and groups
- Enable card for arming and disarming in schedules

Scales as your business grows

- Can manage users and security from 1 Galaxy panel to many

- Can be upgraded to also manage Access, Video security systems in one place

Minimizes onboarding and training costs

- Galaxy specific floor plan display
- Clearly shown status updates
- View alarms directly on the floor plan
- Context sensitive Help

Minimizes maintenance and system supervisory costs

- Predefined or customized reports
- Schedule email of predefined reports
- Export in HTML or delimited format
- Prioritized alarm events

Limited DCM and MAX control

- Selecting Access Templates and Schedules

Minimizes server deployment costs

- Supports VMWare 6.0 to help leverage existing IT infrastructure and server assets

WIN-PAK® 4.6 for Galaxy Specifications

	WIN-PAK GX 4.6 FOR GALAXY	WIN-PAK XE 4.6 FOR ACCESS	WIN-PAK SE 4.6 FOR INTEGRATION	WIN-PAK PE 4.6 ULTIMATE
	WPG46	WPX46	WPS46G	WPP46G
GALAXY INTRUSION INTEGRATION	5	NA	Up to 50	More than 50
SYSTEM WORKSTATIONS/USERS	1	1	5	Unrestricted
ACCOUNTS	1	1	1	5
NOTIFICATIONS AND REPORTING	Included			
INTERACTIVE FLOOR PLANS	Included			
CUSTOM CARDHOLDER FIELD TEMPLATES	40			
SENSOR SPECIFICATIONS	Included			
WEBBROWSER	NA	Included-Access Only		
INTEGRATED VIDEO	NA	NA	40 NVRs x 64 Cameras = 2,560 Cameras	
HON-FIN4000 SUPPORT (VERSION 1)	NA	NA	32	600
TIME AND ATTENDANCE REPORTS WEB MODULE	NA	NA	NA	Included
ELEVATOR CONTROL	NA	Included		
PHOTO ID PRODUCTION	NA	Included		
LOCKDOWN	NA	Included		
TRACKING AND MUSTER REPORTS	NA	Included		
GUARD TOUR REPORTS	NA	Included		

SUPPORTED INTRUSION	
GALAXY® DIMENSION	GD-48, GD-96, GD-264, GD-520 firmware version V6.92 or higher (Ethernet module E080-4 or higher required)
GALAXY® FLEX	FLEX 20, FLEX 50, FLEX-100 firmware version V3.18 or higher (Ethernet module A083-00-02 or higher required)
GALAXY® FLEX+	FLEX+ 20, FLEX+50, FLEX+100 firmware version V3.35 or higher (Ethernet module A083-00-02 or higher require)
SUPPORTED ACCESS (AFTER UPGRADE FROM WIN-PAK FOR GALAXY)	
NETAXS-123	PRO3200
NETAXS-4	PW6000 (with WPP46G) - Panel to approved installers only
SUPPORTED VIDEO (AFTER UPGRADE FROM WIN-PAK FOR GALAXY)	
MAXPRO NVR	PERFORMANCE SERIES ENVR (INCLUDES 4K MODELS)
MAXPRO® HYBRID	FUSION®

Ordering

WIN-PAK 4.6	
WPG46	WIN-PAK GX 4.6 for Galaxy
WPX46	WIN-PAK XE 4.6 for Access
WPS46G	WIN-PAK SE 4.6 for Integration
WPP46G	WIN-PAK PE 4.6 Ultimate
UPGRADES FROM WIN-PAK GX 4.5	
UG46S46G	Upgrade from WPG46 to WPS46G
UG46P46G	Upgrade from WPG46 to WPP46G

Other upgrades from previous WIN-PAK versions are available, please consult with your Honeywell representative.

For more information

please visit www.honeywell.com/security/uk

Honeywell Security Group

Aston Fields Road
Whitehouse Industrial Estate
Runcorn
Cheshire
WA7 3DL
Tel: +44 (0)8448 000 235
www.honeywell.com

HSFI-WPGX46-01-UK(0618)DS-E
© 2018 Honeywell International Inc.

WIN-PAK® is a registered trademark of Honeywell International Inc.

WIN-PAK 4.6 supports the following 64-bit and 32-bit OS: Windows Server 2016, Windows Server 2012 R2, Windows Server 2012, Windows Server 2008 R2, Windows 10.

SQL supported:
SQL 2014 Enterprise, Standard, Express
SQL 2012 Enterprise, Standard, Express

VMWare Supported:
ESXi 6.0.

Languages Supported:
Arabic, Chinese, Czech, Dutch, English, French, German, Italian, Polish, Portuguese, and Spanish.

Microsoft®, Windows® Server 2016, Windows® Server 2012, Windows® Server 2008, Windows 10, Edge, Internet Explorer and SQL Server are registered trademarks of Microsoft Corporation
Chrome and Android is a trademark of Google Inc.
iOS, iPad® and iPhone® are a registered trademarks of Apple Inc. All other trademarks are property of their respective owners.

Honeywell