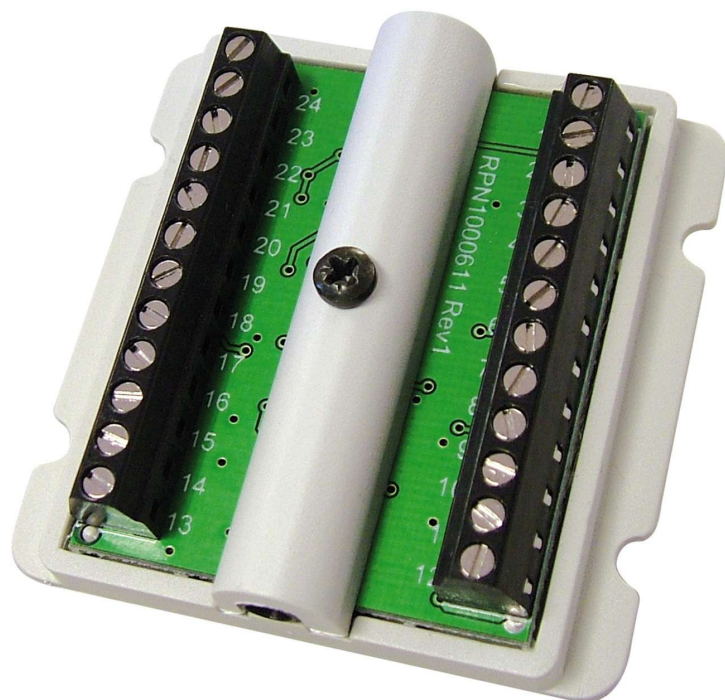


# Quantec Multi-Purpose Programmable Device

Part No. **QT611**



## Overview

- Allows third-party switch assemblies and indicators to be interfaced to Quantec for use as call points, monitoring points, day/night switches and more.
- Can be programmed to operate in a multitude of ways using a QT432 Quantec Configurator.
- Measures just 56mm square x 10mm deep.
- Helps facilitate compliance with HTM-08-03.



## More Information

## Technical Specifications

Quiescent current	Dependent on load.
Connections	Includes multiple input and output connections - refer to instructions for details.
Product dimensions (mm)	56 W x 56 H x 12 Dmm.
Construction & finish	Plastic.
IP Rating	TBC.
Weight	38g
Operating conditions/temperature	-5°C to +40°C. Max relative humidity: 95%.
Notes	Programming requires a QT423 configurator.